

UNITED STATES PUBLIC LAND SURVEY CORNER CERTIFICATE FOR

Land survey monuments situated in Section 31, Township 106 North, Range 41 West, of the Fifth Principal Meridian, Murray County, Minnesota..

Previously recorded in N/A in County Recorder's Office.

(Show reason for preparing this certificate, the evidence and detailed procedure used in establishing the corner position & monumentation found or placed.)
 MONUMENT DESCRIPTION AND REMARKS: On October 16, 2012 we dug with backhoe for North 1/4 Corner &

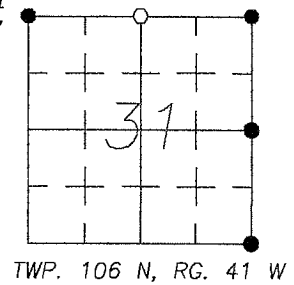
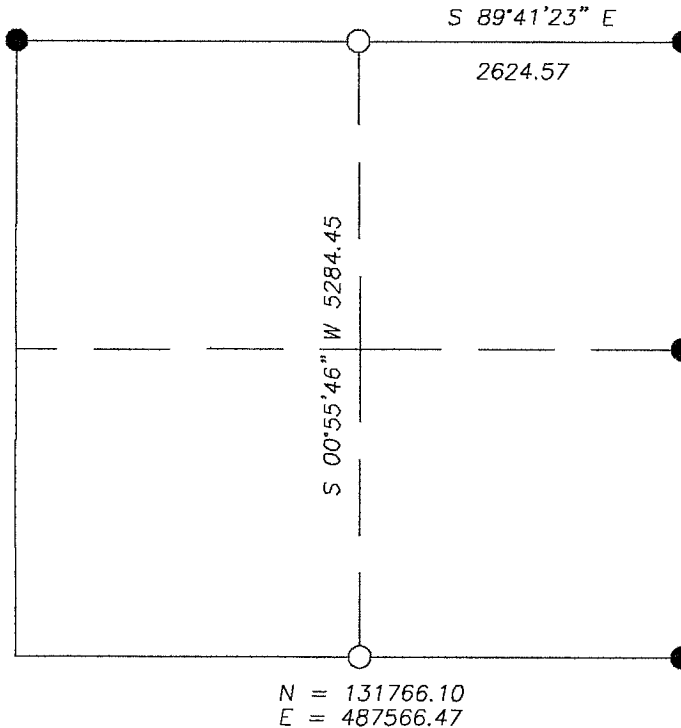
found a 6" X 6" concrete monument 1" below surface at centerline of Township Road 2' West at fence
to South. County Highway records indicated a concrete monument on October 11, 1974. Accepted concrete
monument for corner.

We also dug with backhoe for South 1/4 Corner & found rock pile & a deteriorated wood post. Set a
5/8" Iron stake with survey cap 23008 over deteriorated wood post location. County Highway record
indicated a 2" X 2" oak stake in 1902.

MURRAY COUNTY COORDINATES NAD 83 (2007) **PLAN-VIEW**

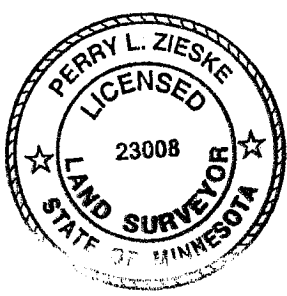
N = 137050.96
 E = 487652.14

N = 137064.10
 E = 485000.32



N = 134400.96
 E = 490244.51

N = 131768.41
 E = 490219.22



I hereby certify that this land surveying document was prepared and related survey work was performed by me or under my direct supervision and that I am a duly licensed Land Surveyor under the laws of the State of Minnesota.

Perry L. Zieske 11-7-12
 Signature Date
 Perry Zieske
 License number 23008

Corners to be Indexed

Corners	Section	Township	Range
N 1/4	31	106	41
S 1/4	31	106	41